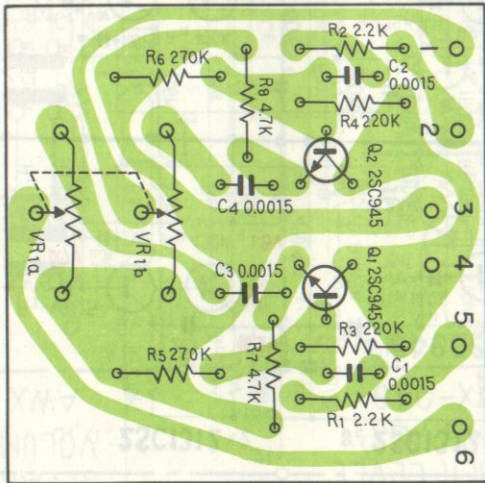


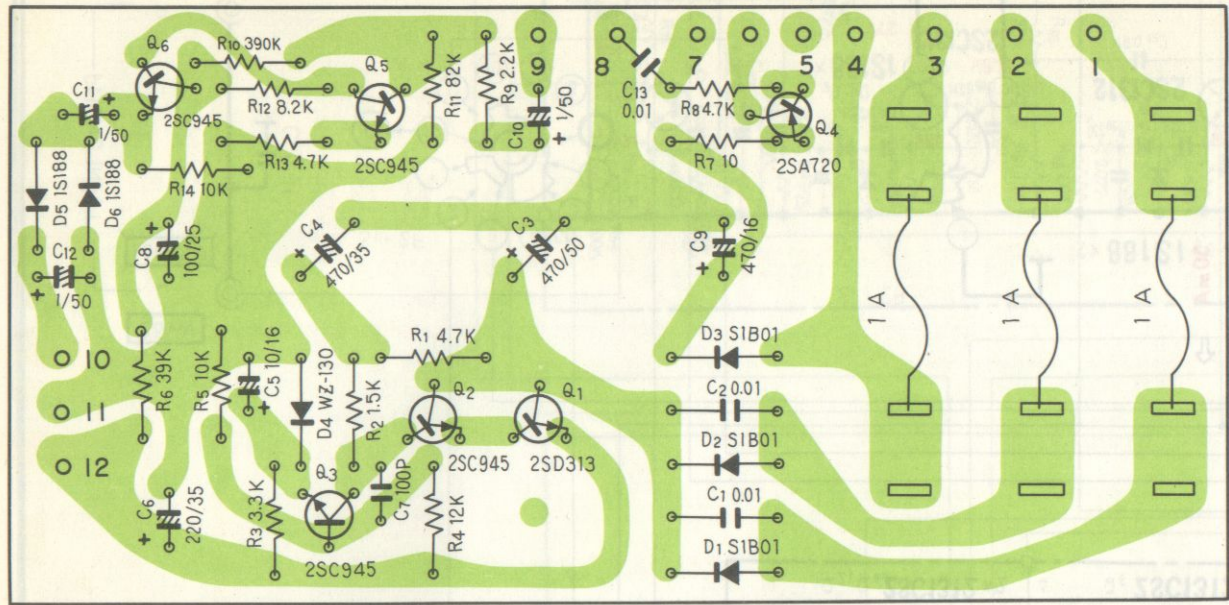
CD-4 DEMODULATOR

QD-240
F KL

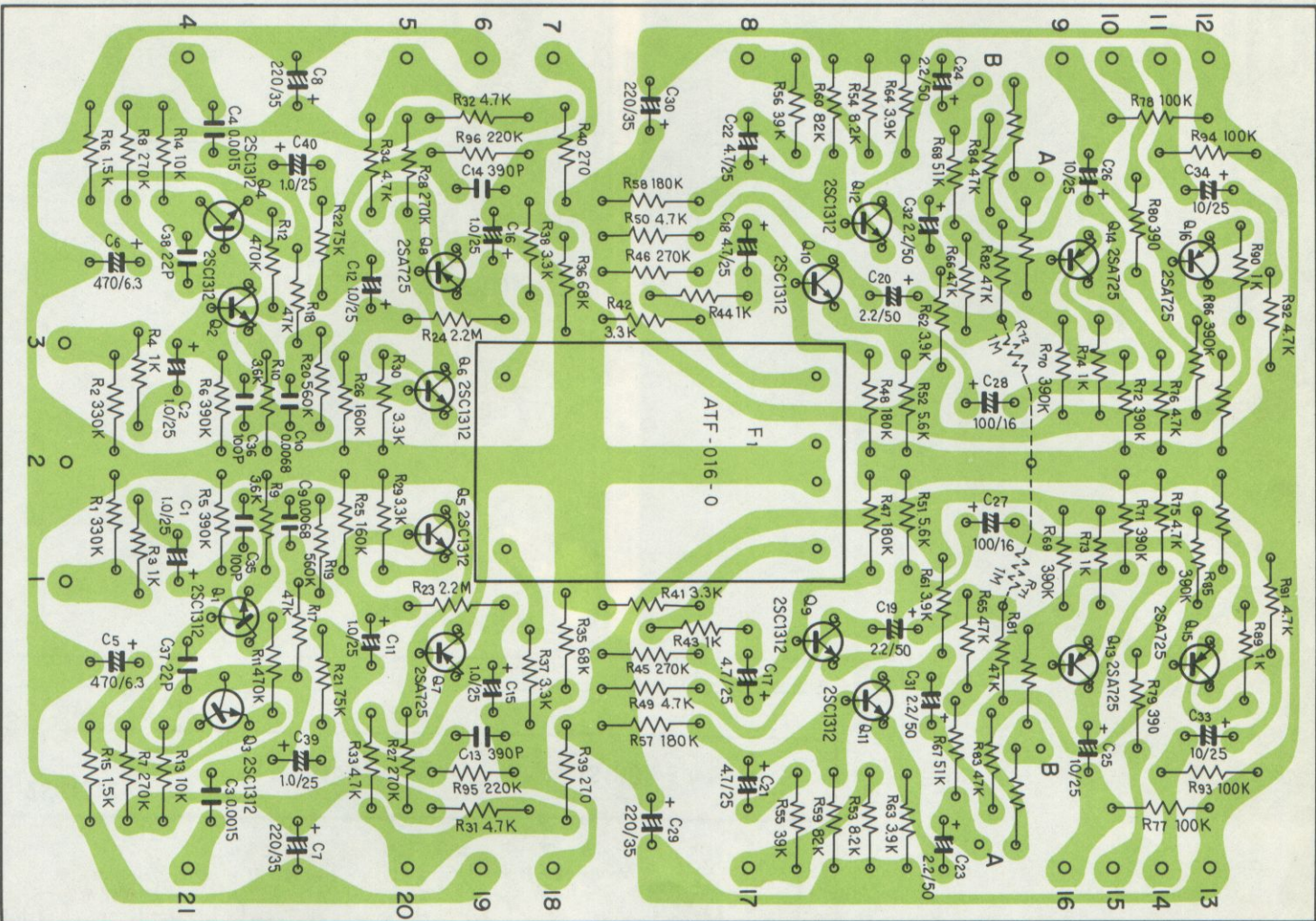
Volume ass'y AWX-049

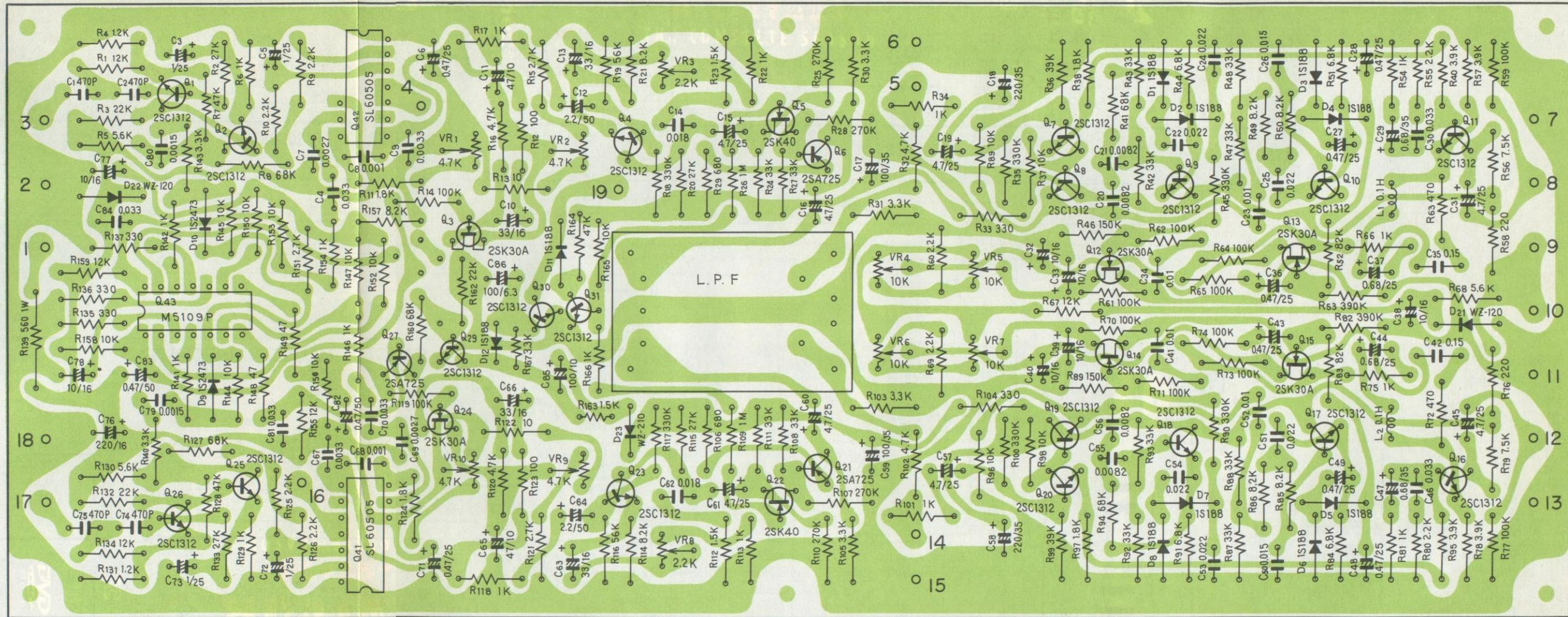


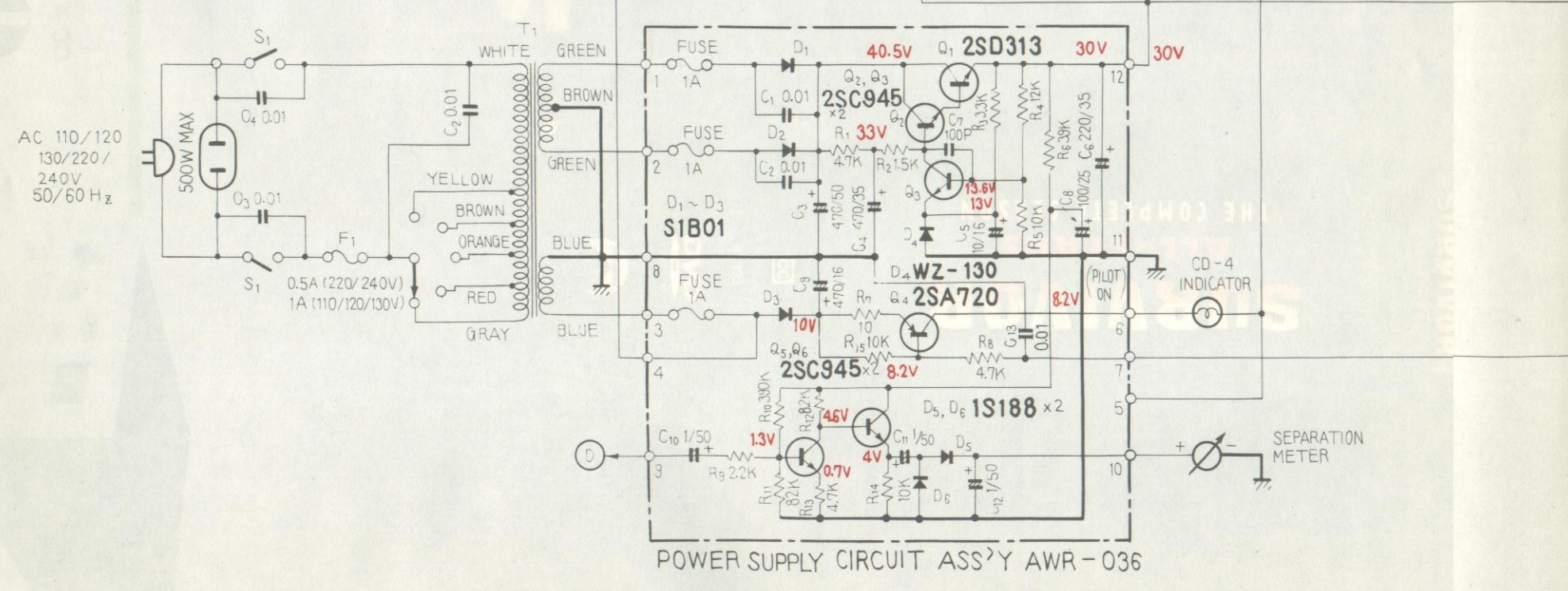
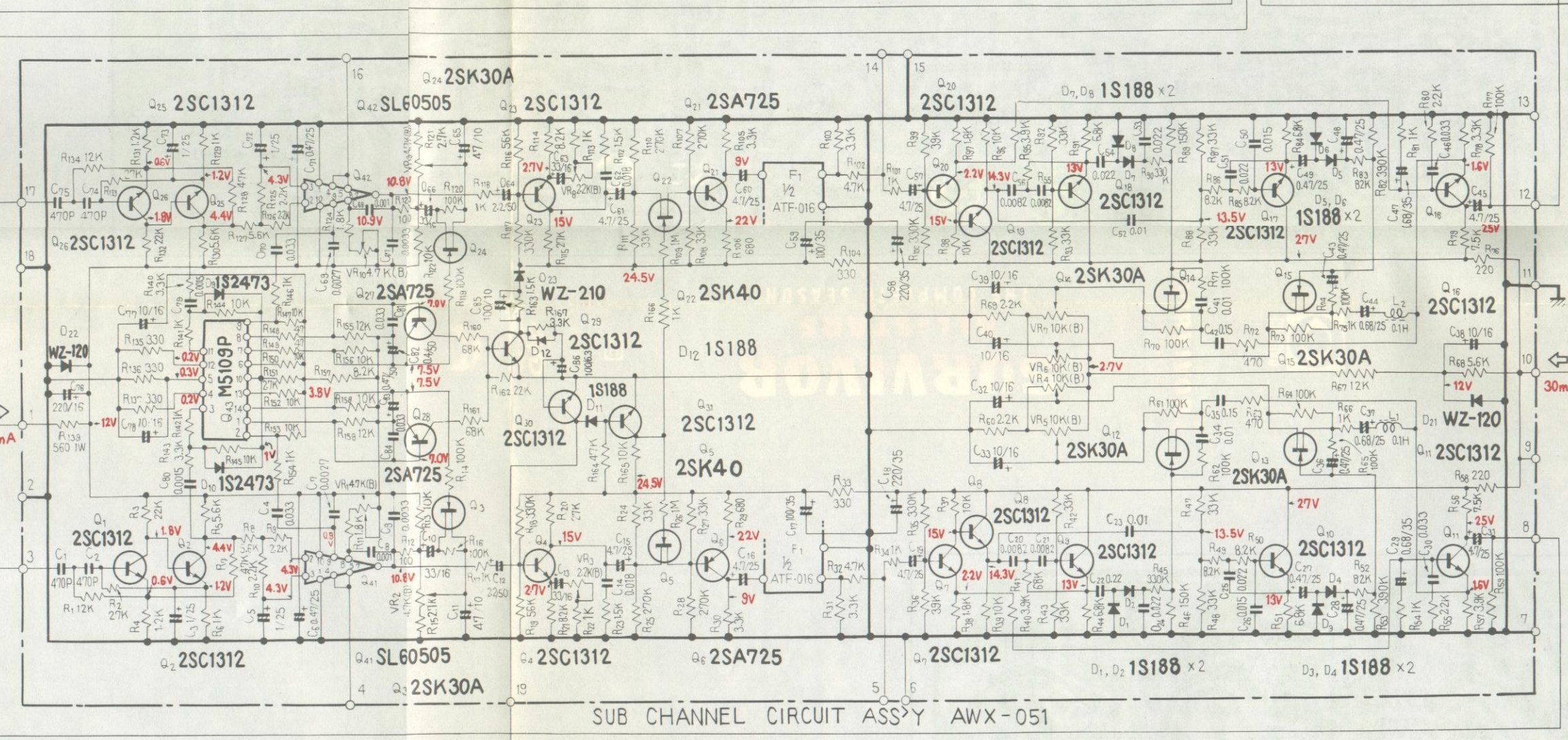
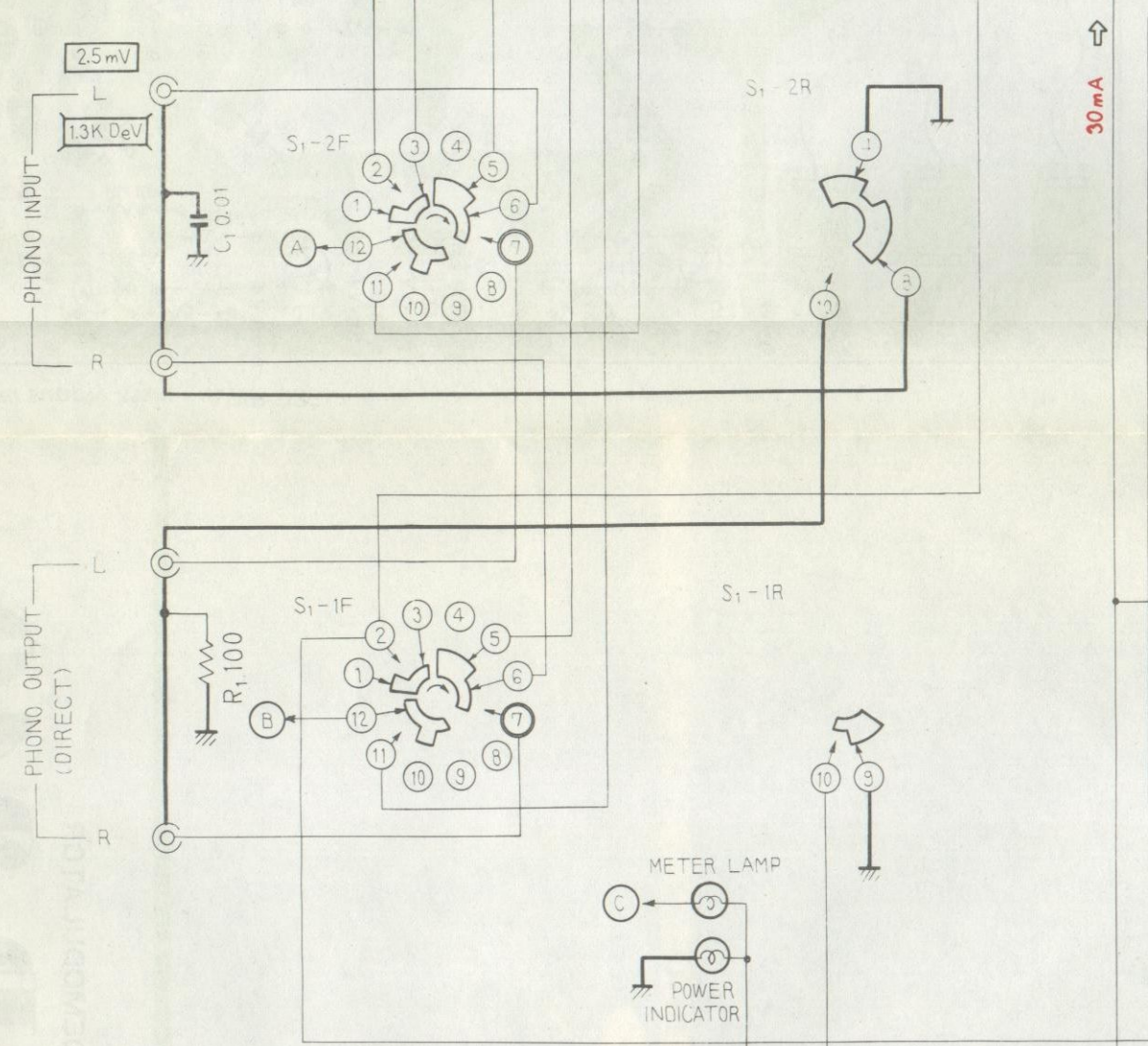
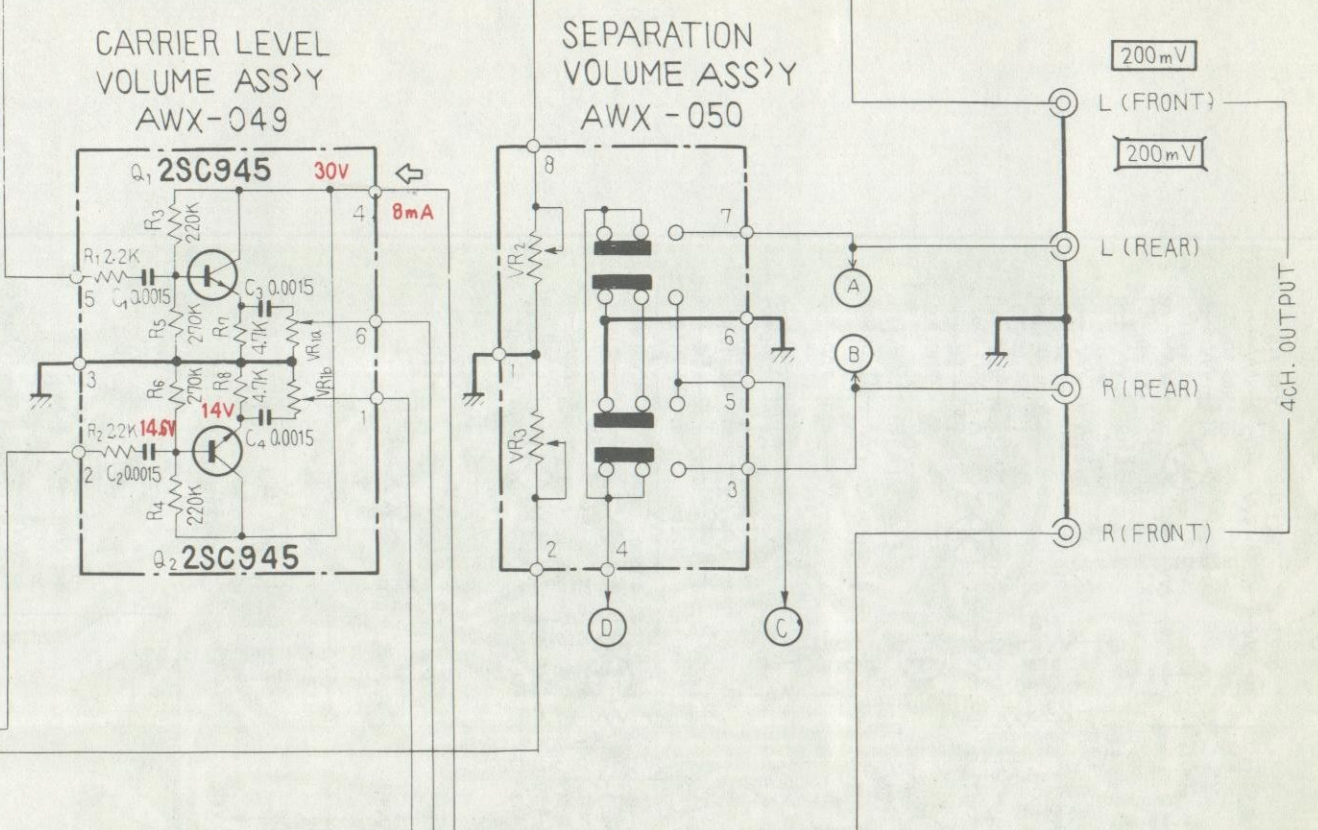
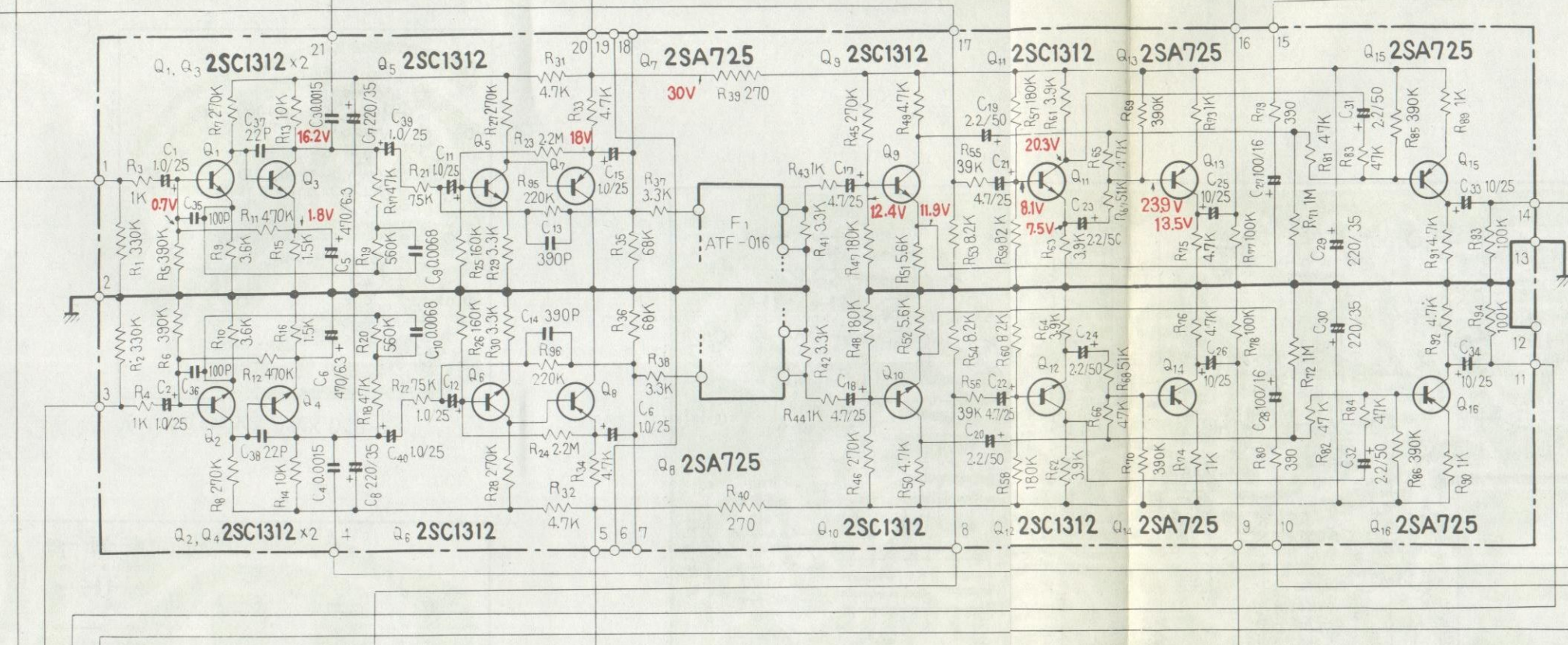
Power supply ass'y AWR-036



Equalizer matrix ass'y AWM-043







- SWITCHES**
 S₁: MODE (2CH position)
 1. 2CH
 2. 4CH AUTO
 3. DIRECT
 S₂: POWER (OFF position)
 OFF → ON
- POTENTIOMETERS**
 VR₁: CARRIER LEVEL
 VR₂, VR₃: SEPARATION

RESISTORS
 IN OHM, 1/4 W, ±5% TOLERANCE
 UNLESS OTHERWISE NOTED. K = KΩ, M = MΩ.

CAPACITORS
 IN μF UNLESS OTHERWISE NOTED. p = pF.

V: DC VOLTAGE AT NO INPUT SIGNAL.
 A: DC CURRENT AT NO INPUT SIGNAL.
 V: SIGNAL VOLTAGE AT 1KHz (2CH).
 V: SIGNAL VOLTAGE & DEVIATION AT 1KHz (4CH).

